

Key point

- Tooth structure
 - enamel space
 - dentin
 - pulp
- Supporting tissues
 - PDL
 - alveolar bone
 - bone marrow
 - vessels
 - nerve



Key point

- Oral mucosa
 - gingiva
 - alveolar mucosa
 - types of oral mucosa

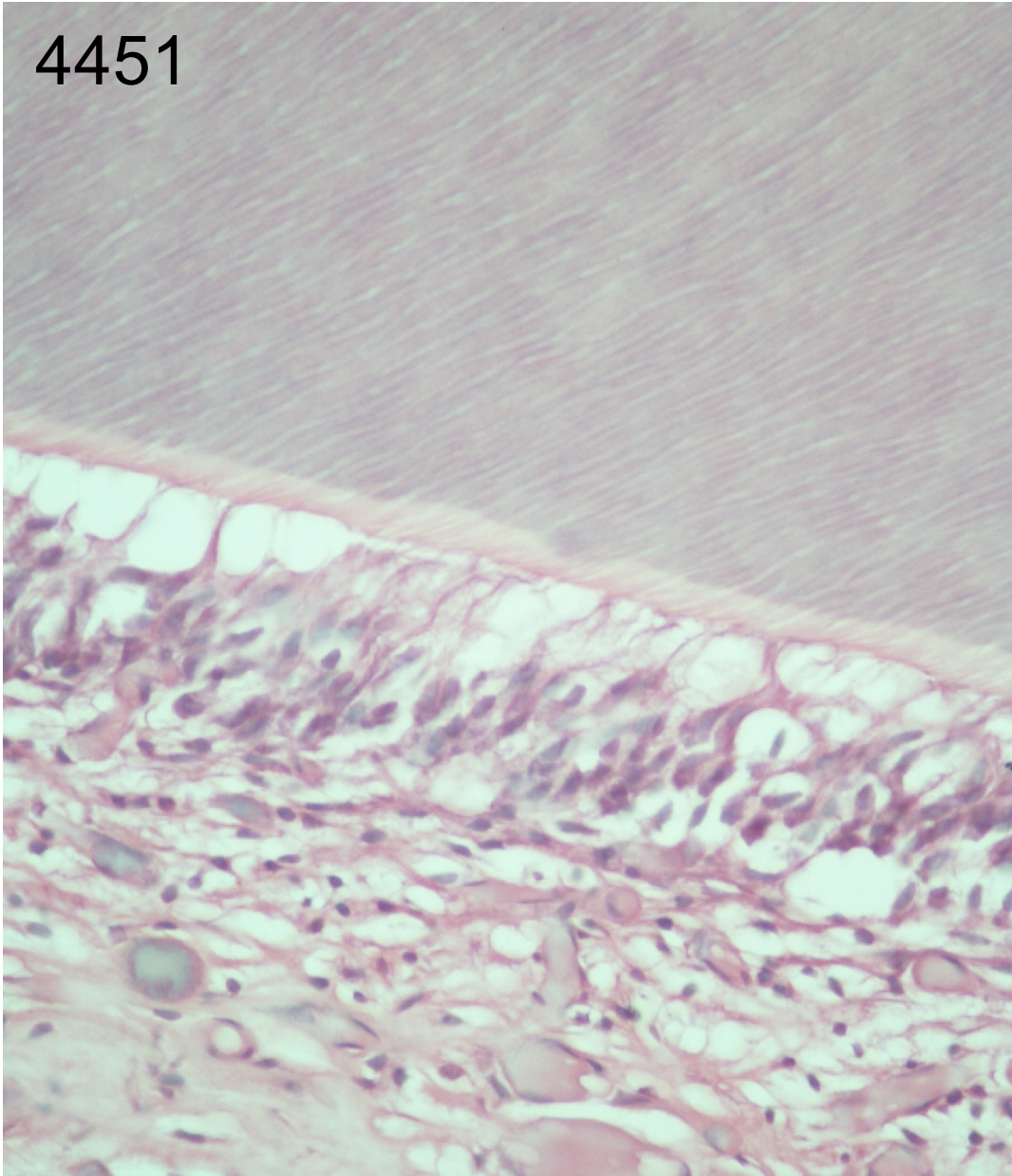
4451



Key point

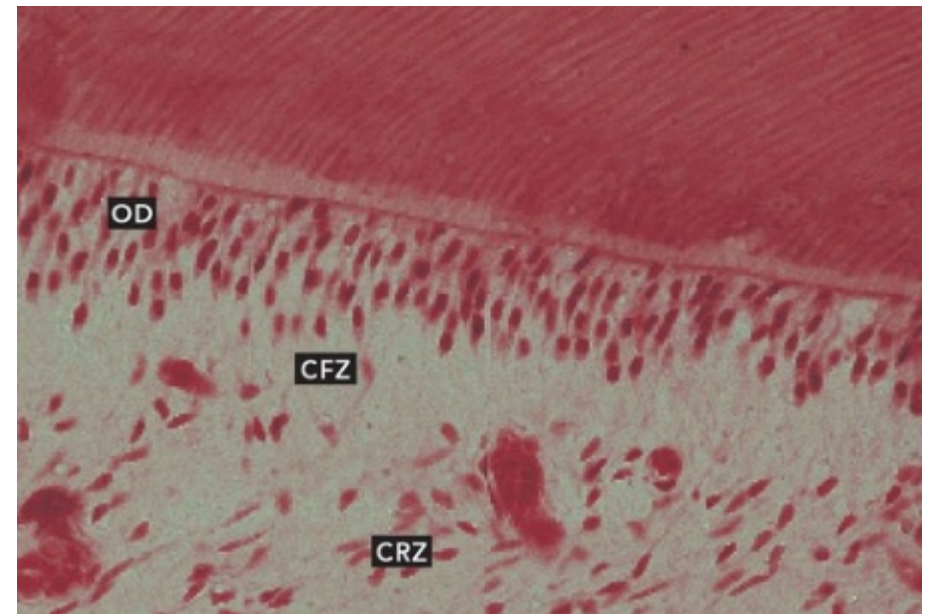
- Predentin
- Dentinal tubules
- Incremental lines of von Ebner
 - vs. dentinal tubule
 - vs. lines of Retzius

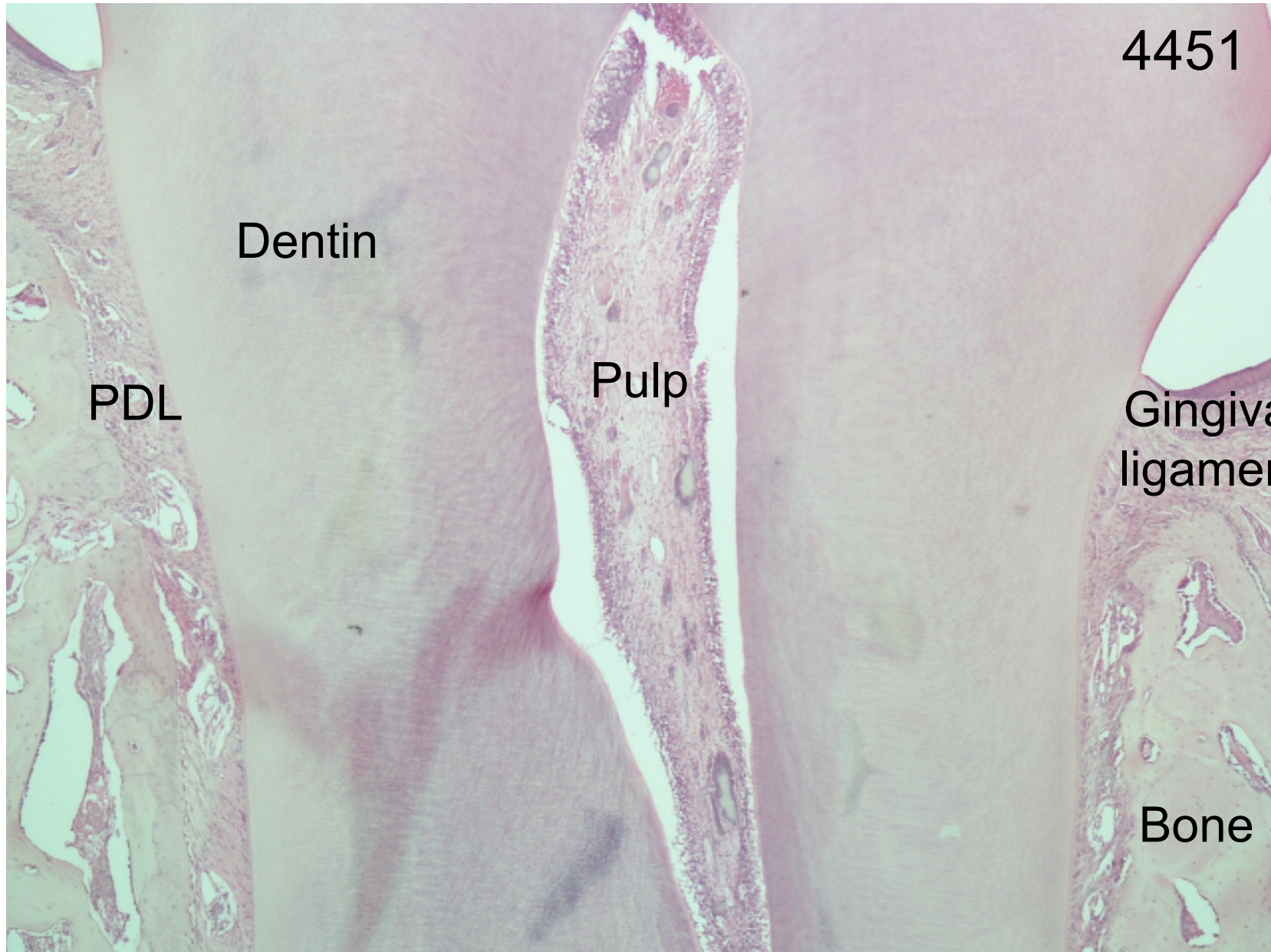
4451



Key point

- Zones of the pulp
 - odontoblast
 - cell free zone
 - cell rich zone
- Predentin
- Dentinal tubules





4451

Dentin

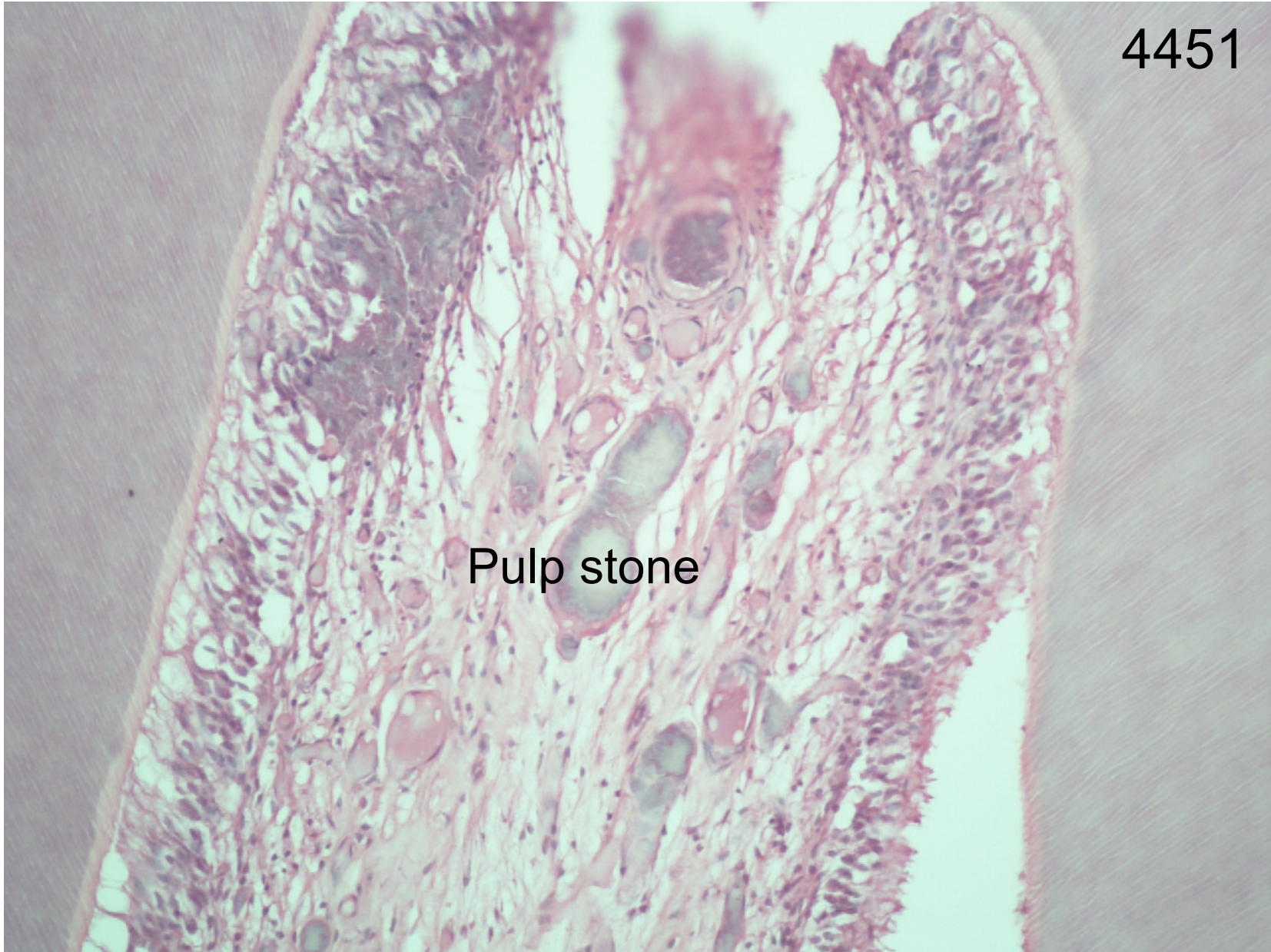
PDL

Pulp

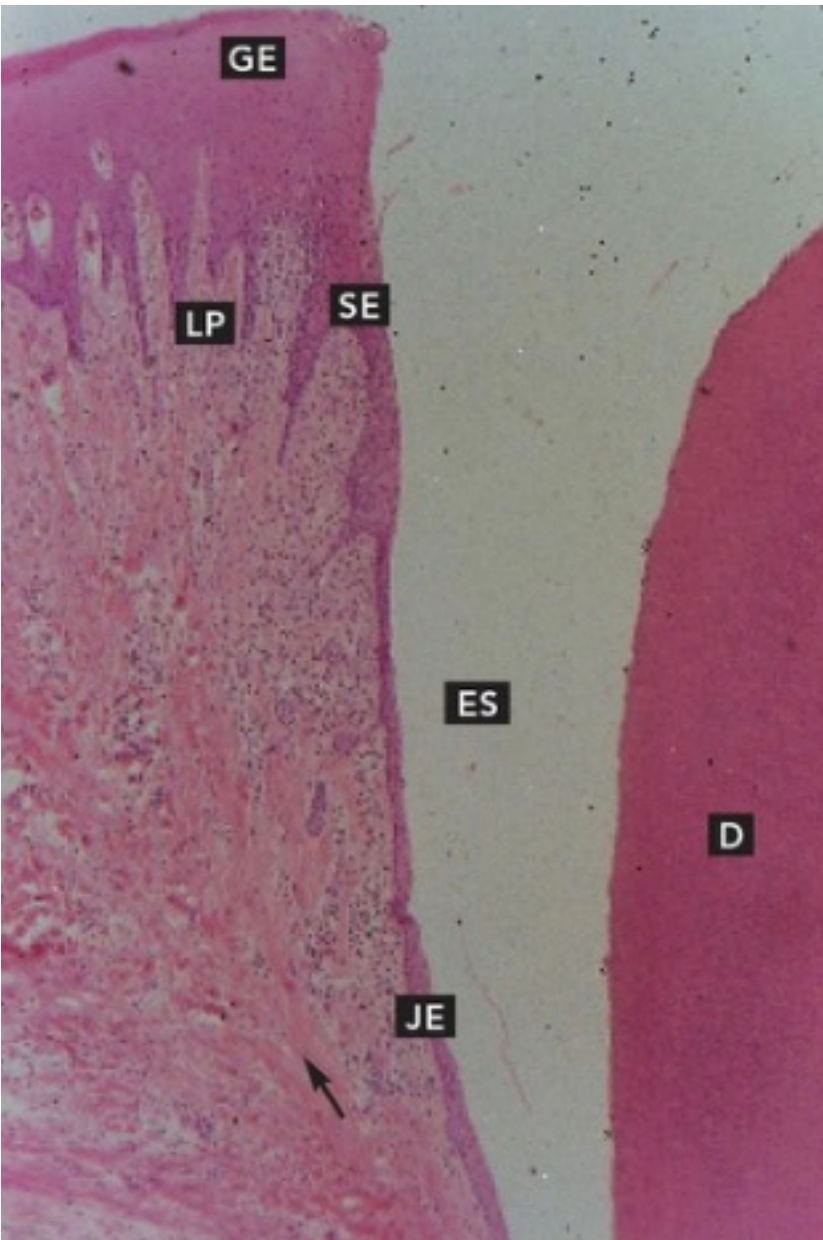
Gingival
ligament

Bone

4451

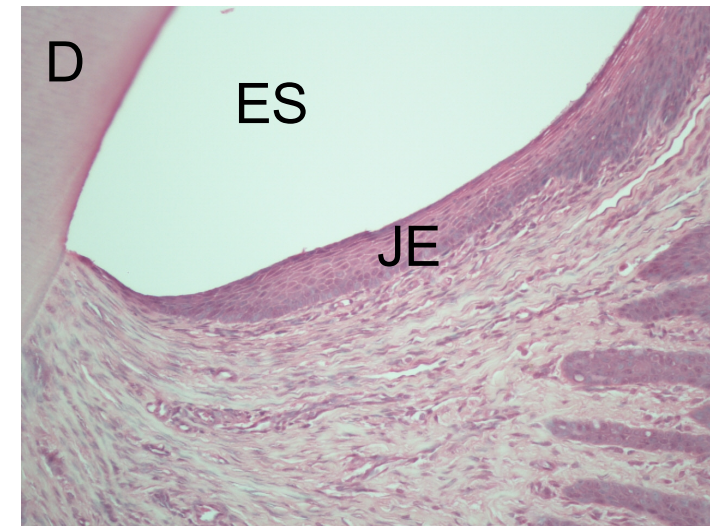
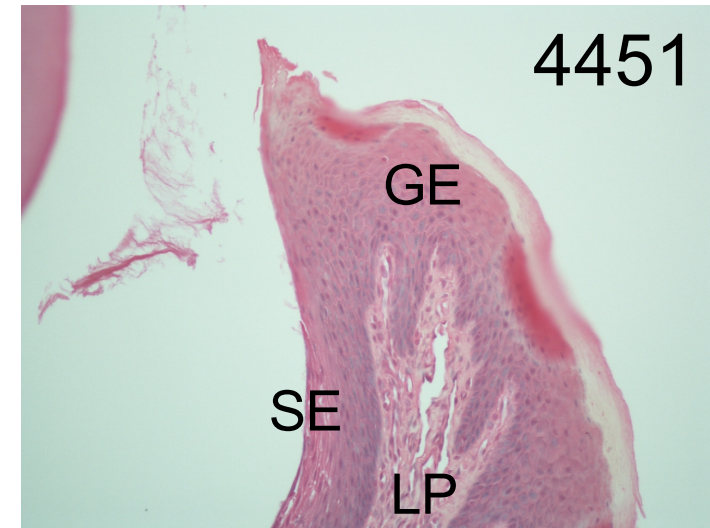


Pulp stone



Key point

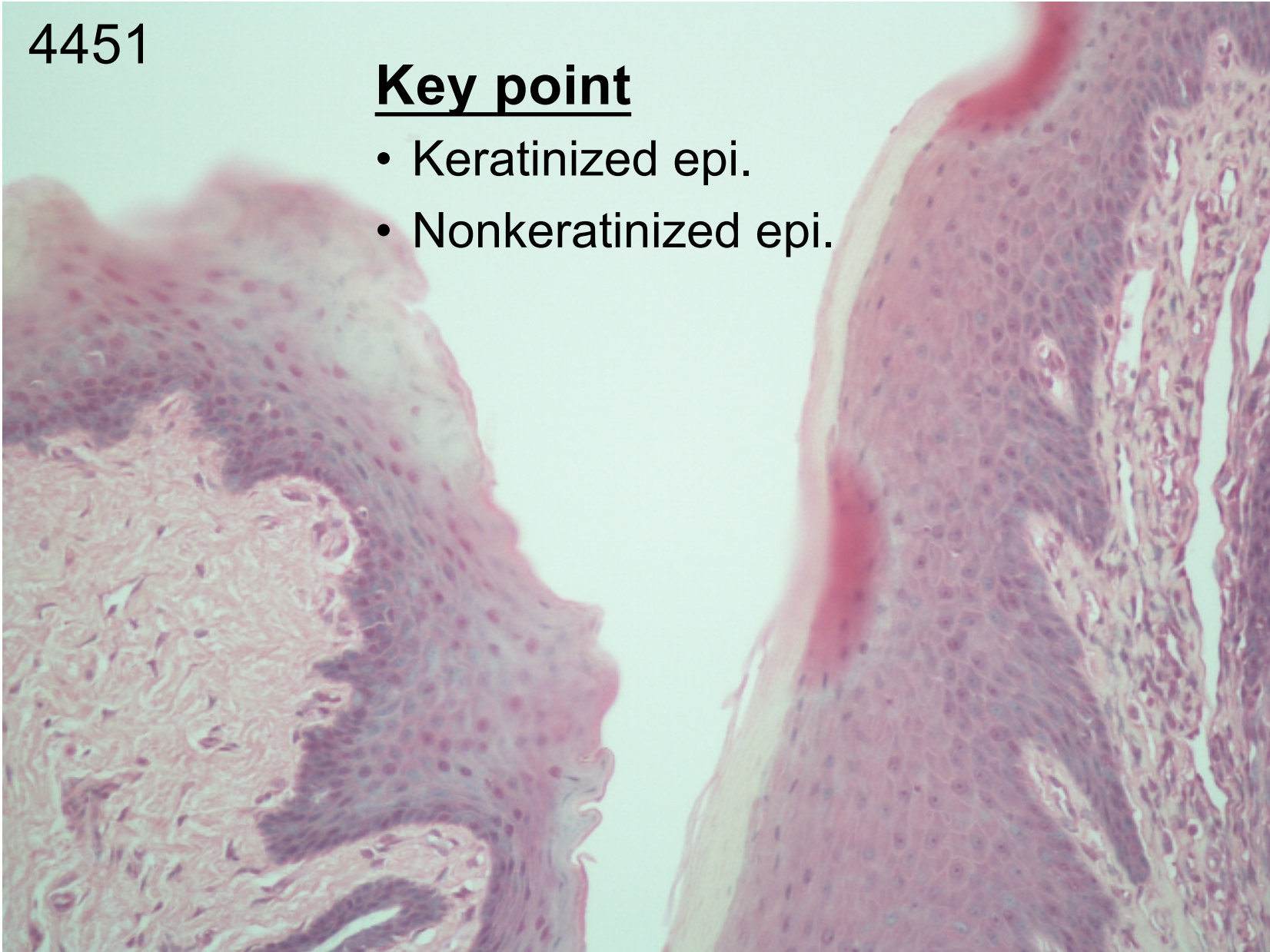
- Gingival epithelium
- Sulcular epithelium
- Junctional epithelium
- Lamina propria
- Orthokeratin
- SE vs. JE



4451

Key point

- Keratinized epi.
- Nonkeratinized epi.



4451

Dentin

Key point

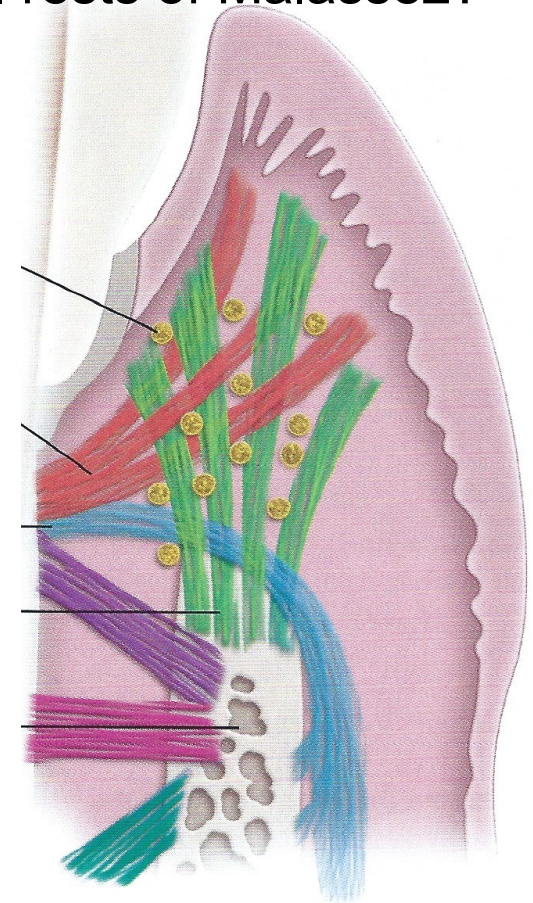
- Gingival ligaments
- Principle fiber bundles
- Cell rests of Malassez?

Dentogingival

Dentoperiosteal

Alveologingival

Alveolar bone



4451

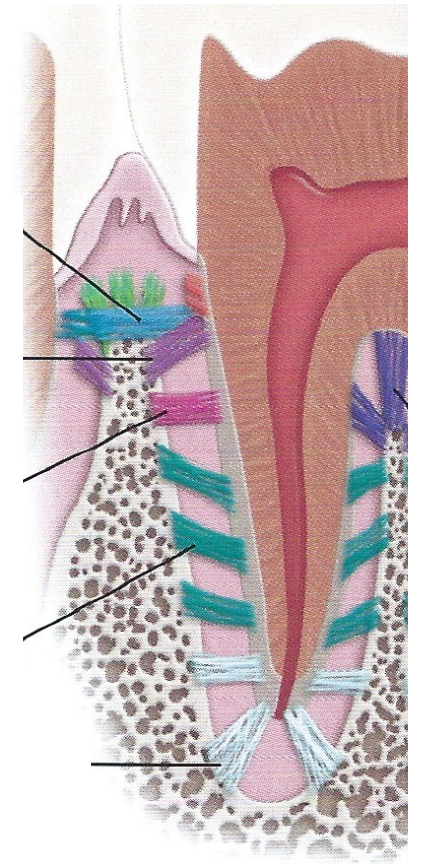
Bone

Dentin

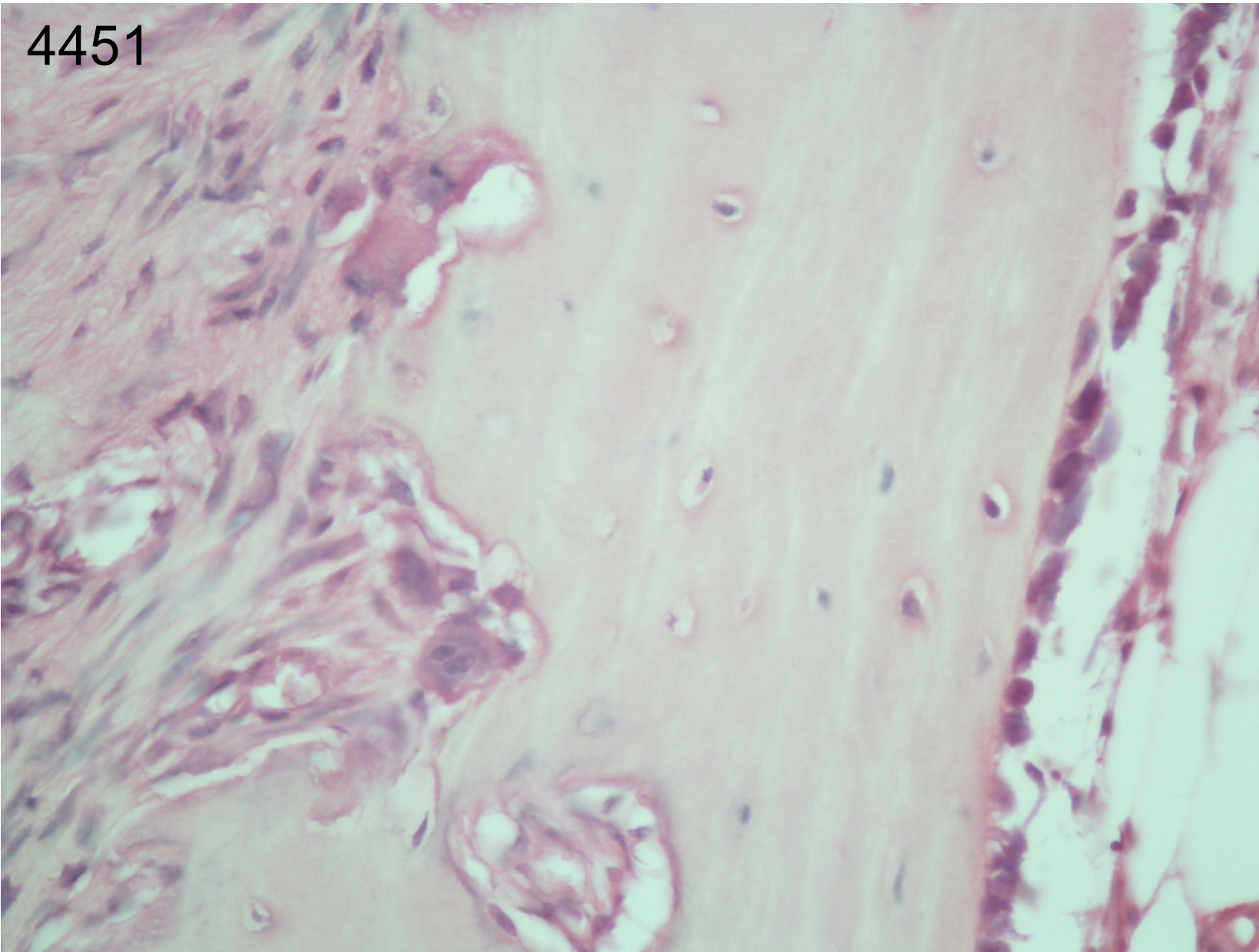
Key point

- Principle fiber bundles
- Blood vessels
- Reversal lines

Oblique group



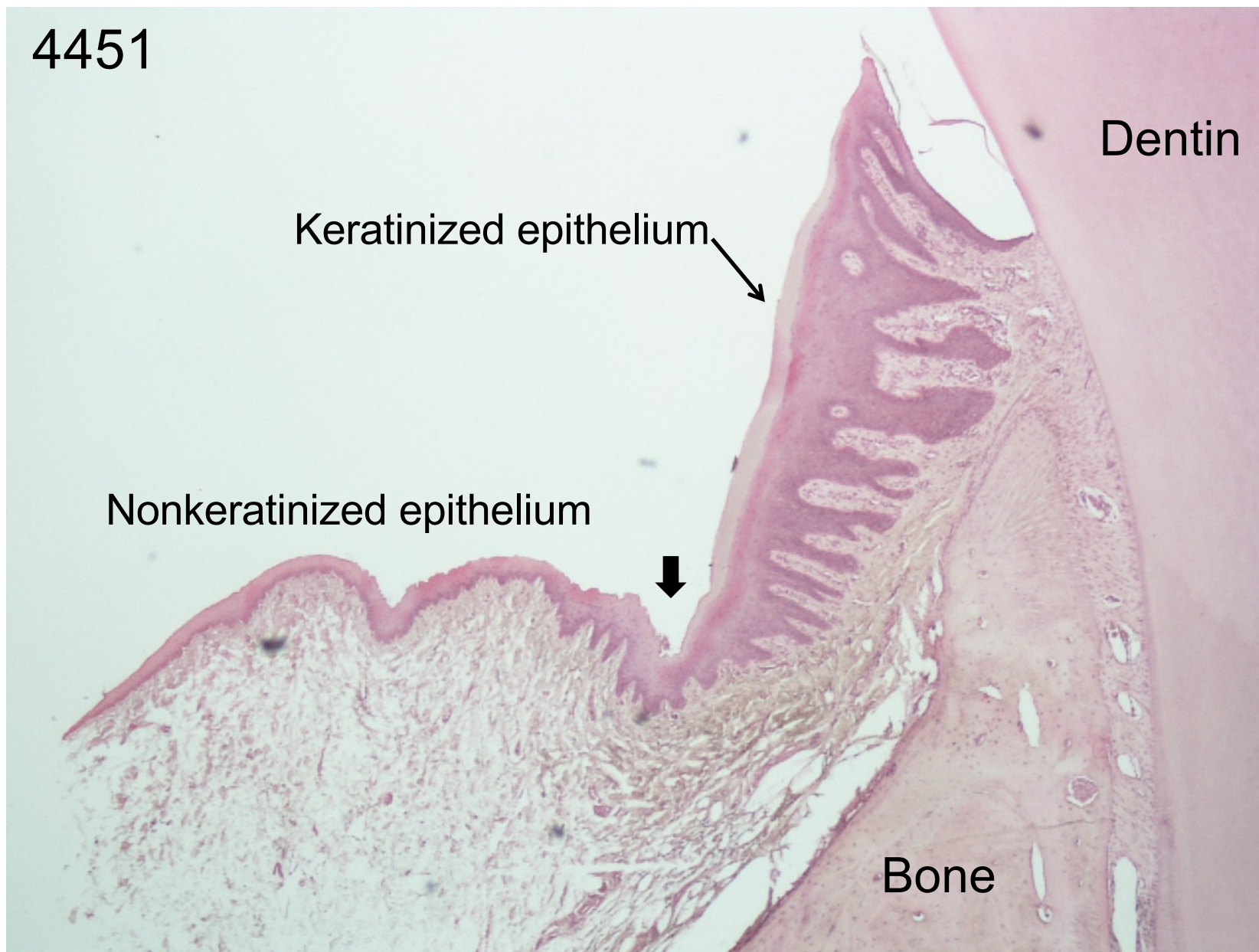
4451



Key point

- Osteoblast
- Osteocyte
- Osteoclast
- Howship's lacunae
- Lamellar bone

4451



Dentin

Keratinized epithelium

Nonkeratinized epithelium

Bone

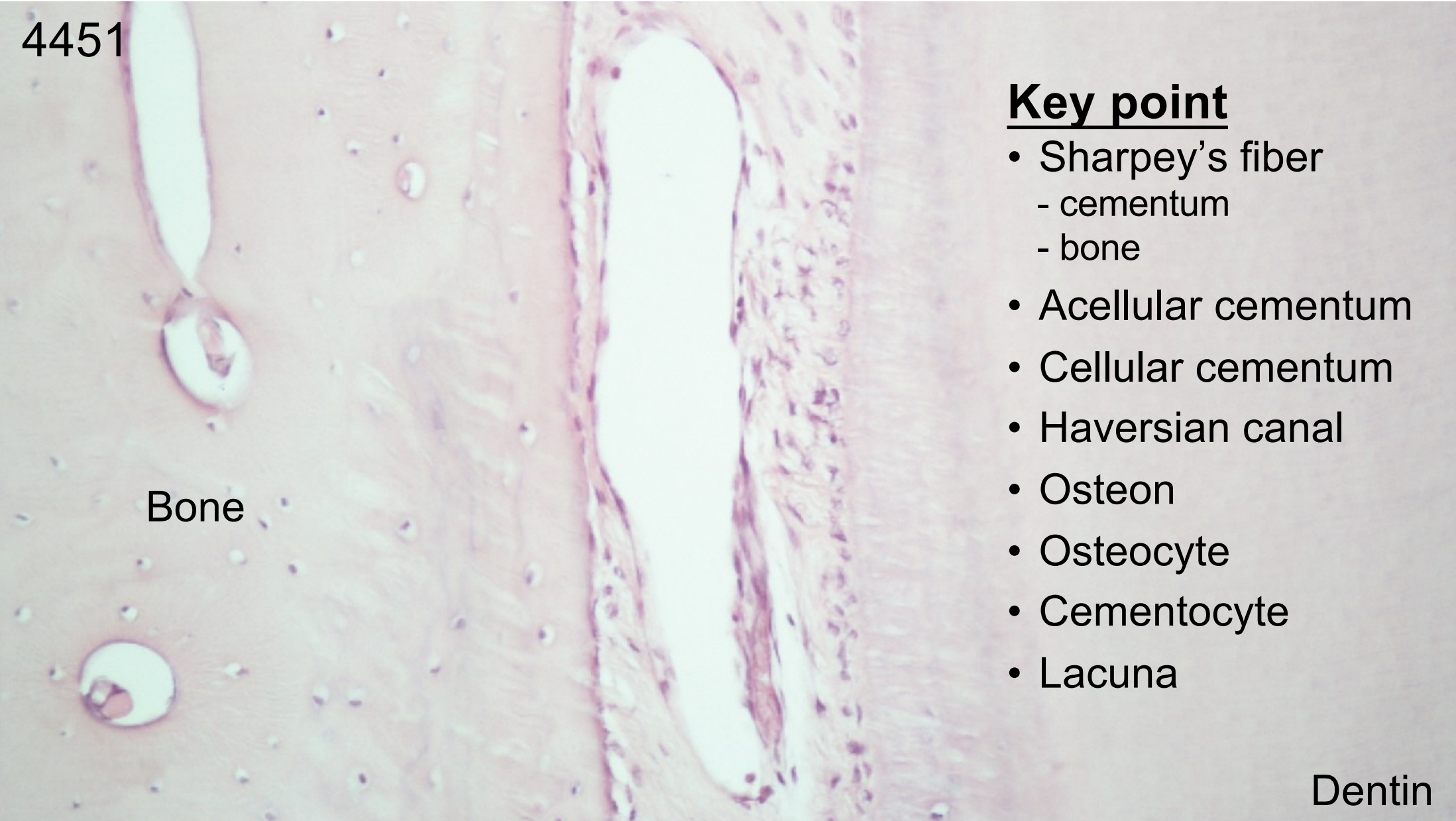
4451

Bone

Key point

- Sharpey's fiber
 - cementum
 - bone
- Acellular cementum
- Cellular cementum
- Haversian canal
- Osteon
- Osteocyte
- Cementocyte
- Lacuna

Dentin



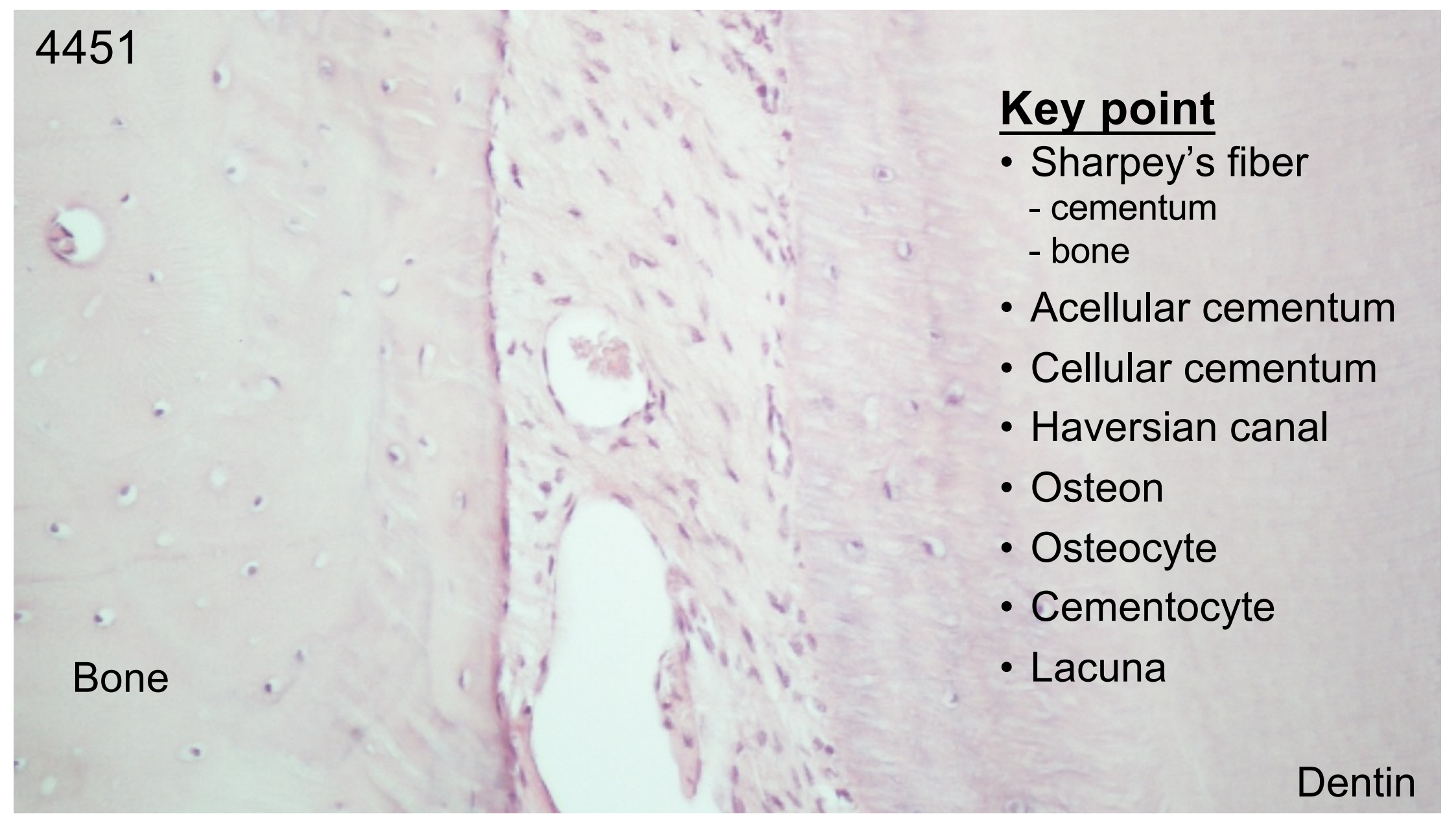
4451

Bone

Key point

- Sharpey's fiber
 - cementum
 - bone
- Acellular cementum
- Cellular cementum
- Haversian canal
- Osteon
- Osteocyte
- Cementocyte
- Lacuna

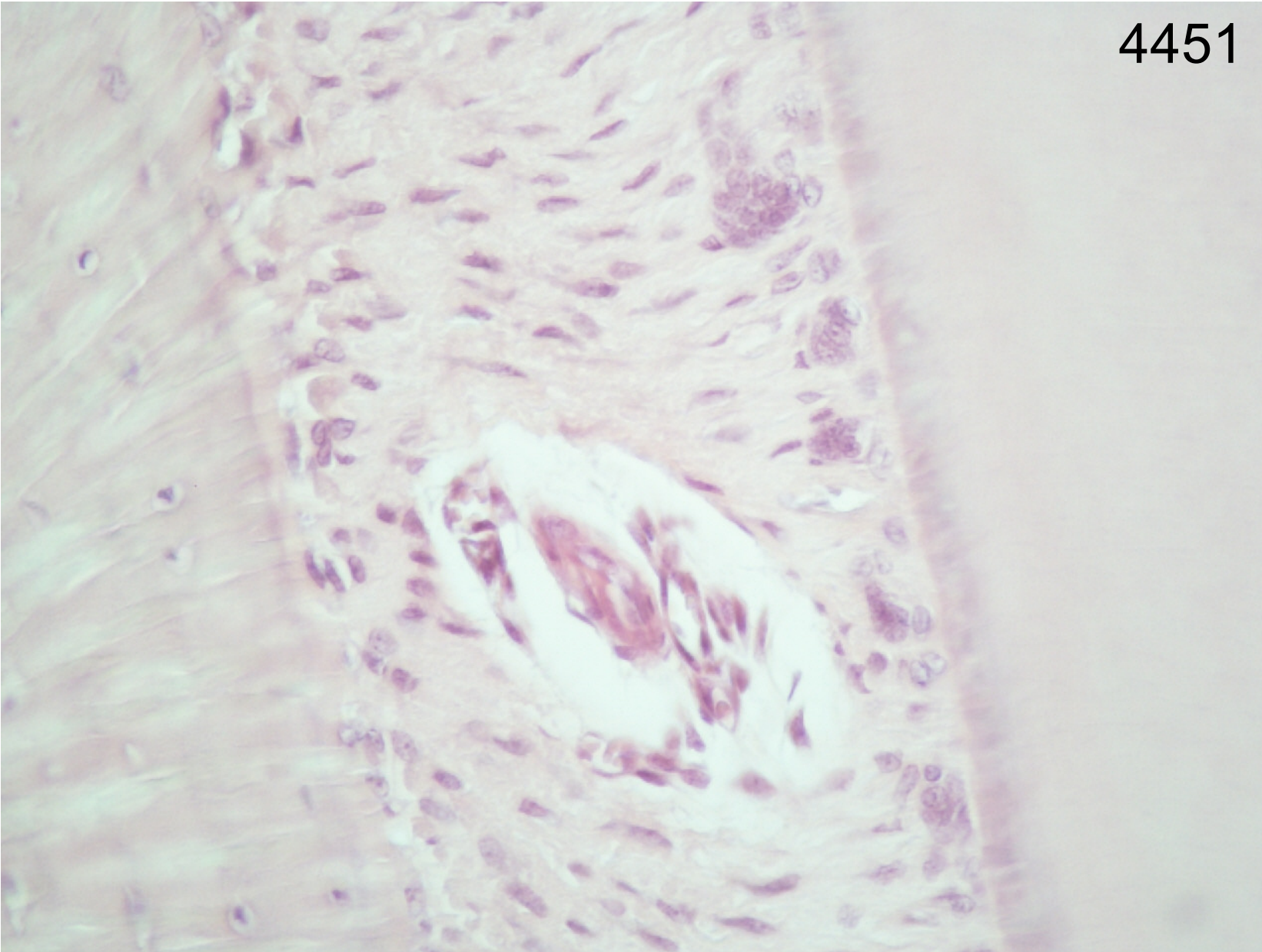
Dentin



4451

Key point

- Sharpey's fiber
 - cementum
 - bone
- Cell rests of Malassez
- Acellular cementum
- Osteocyte
- Lacuna



4455

Key point

- Sharpey's fiber
 - cementum
 - bone
- Cementoblast
- Cementocyte
- Osteocyte
- Lamellar bone