

Bell stage

4430

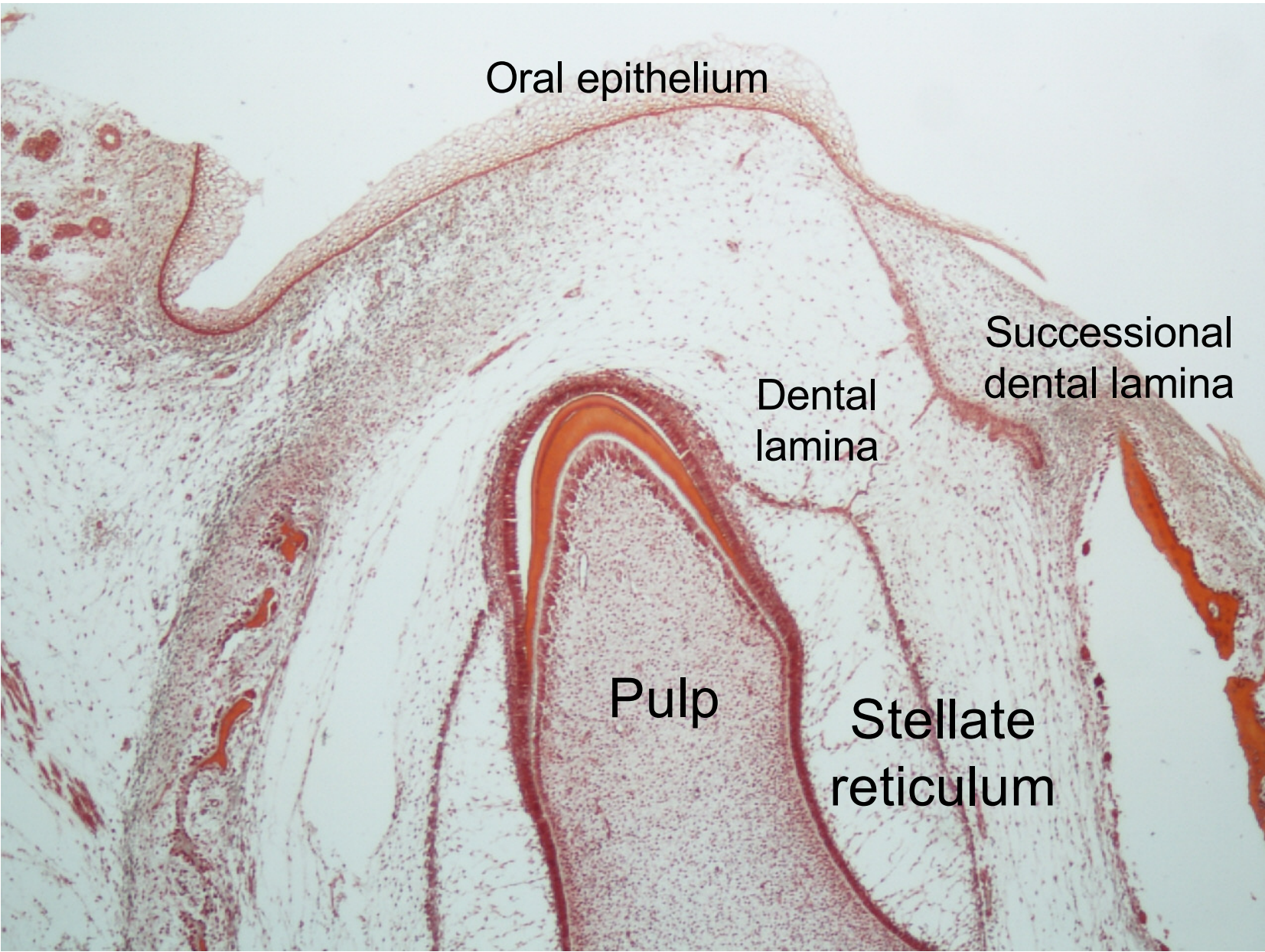
Dentin formation

Muscles

Nerve

Bone

Nasal
cavity



Oral epithelium

Successional
dental lamina

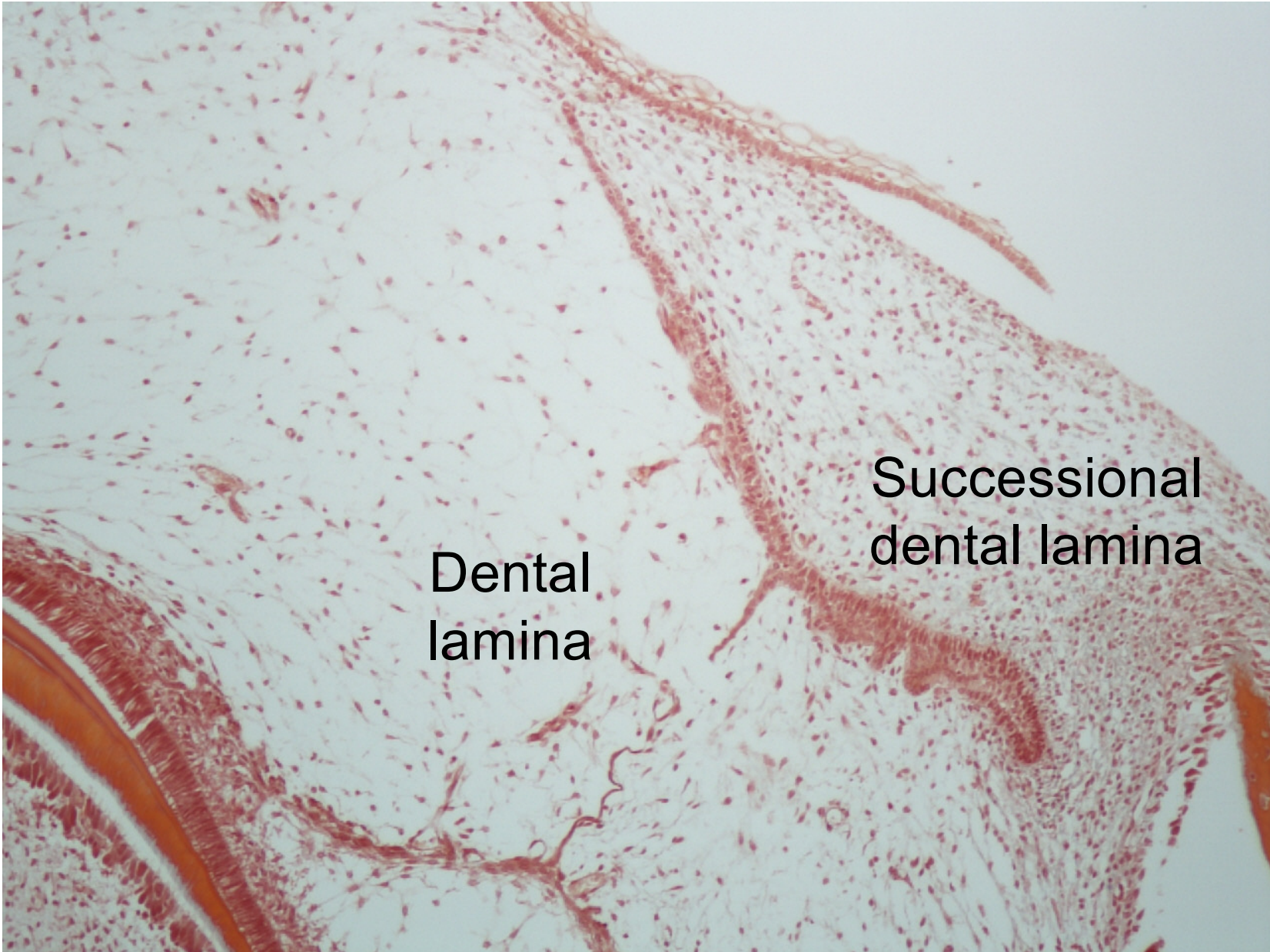
Dental
lamina

Pulp

Stellate
reticulum

Key point

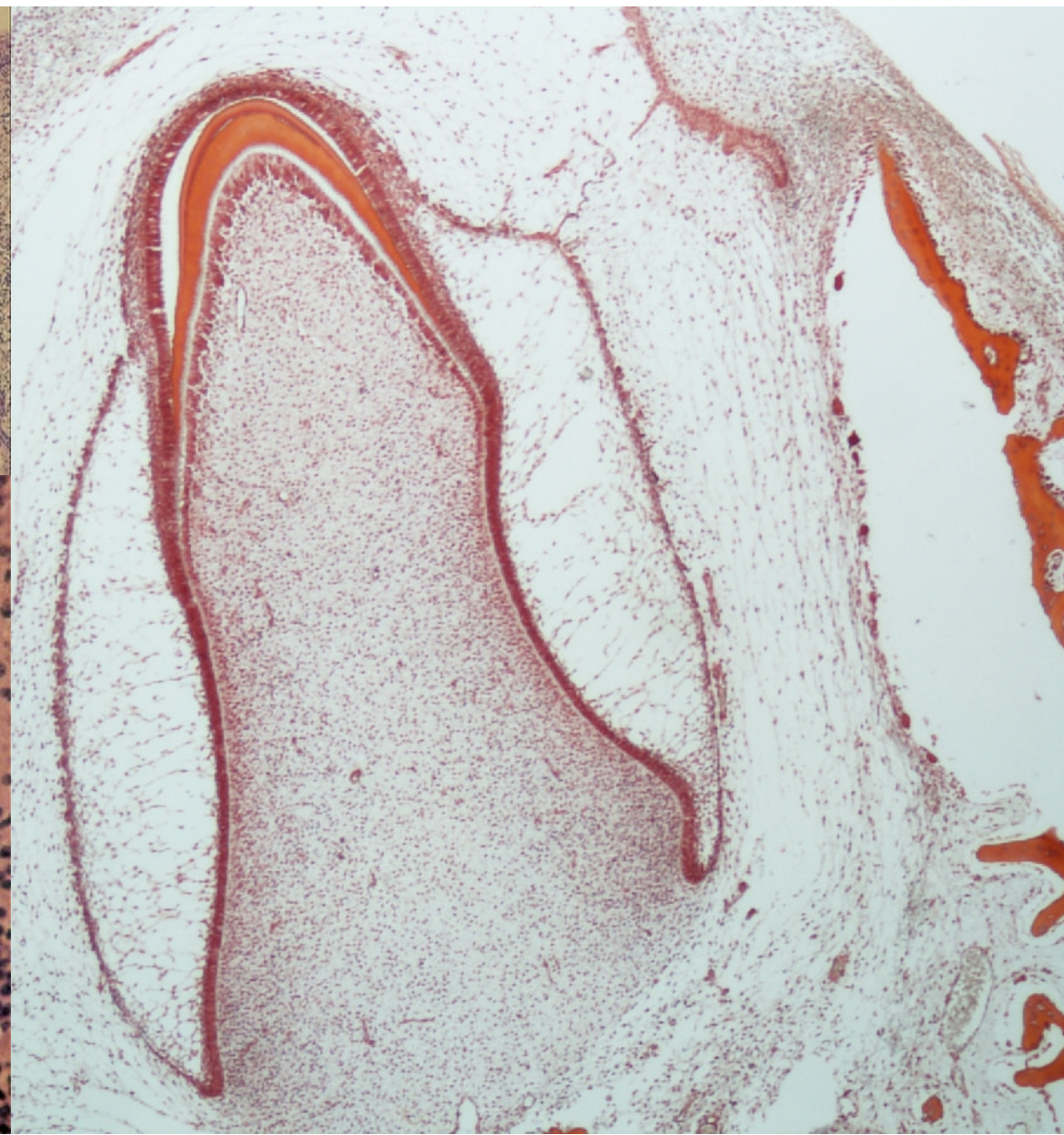
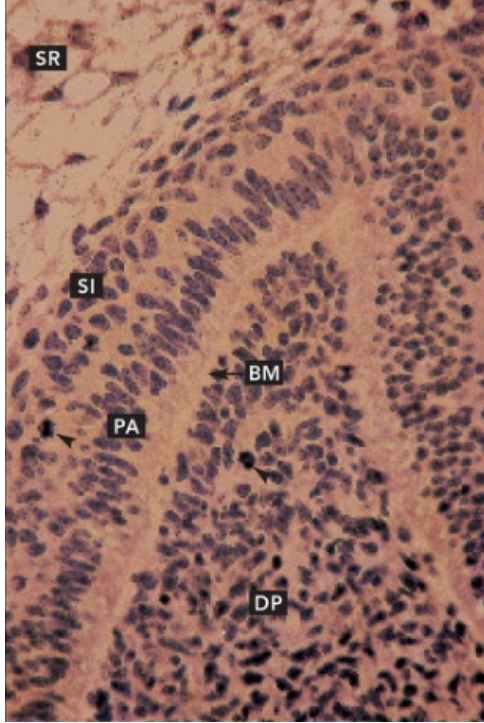
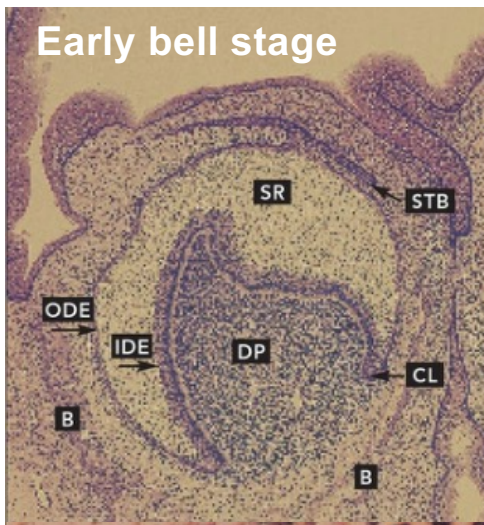
- Ameloblast
- Enamel
- Dentin
- Odontoblast
- Pulp
- Stellate reticulum



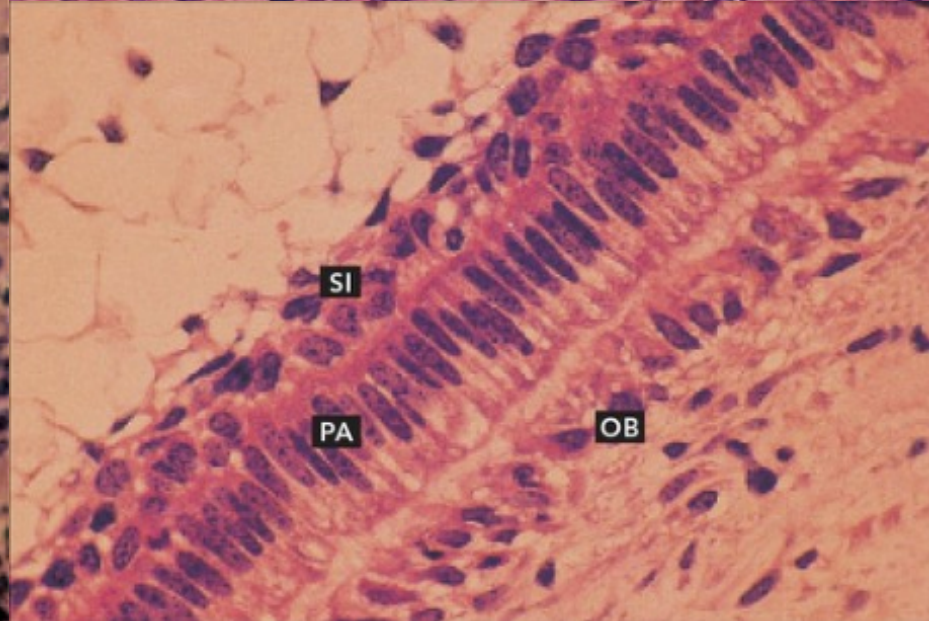
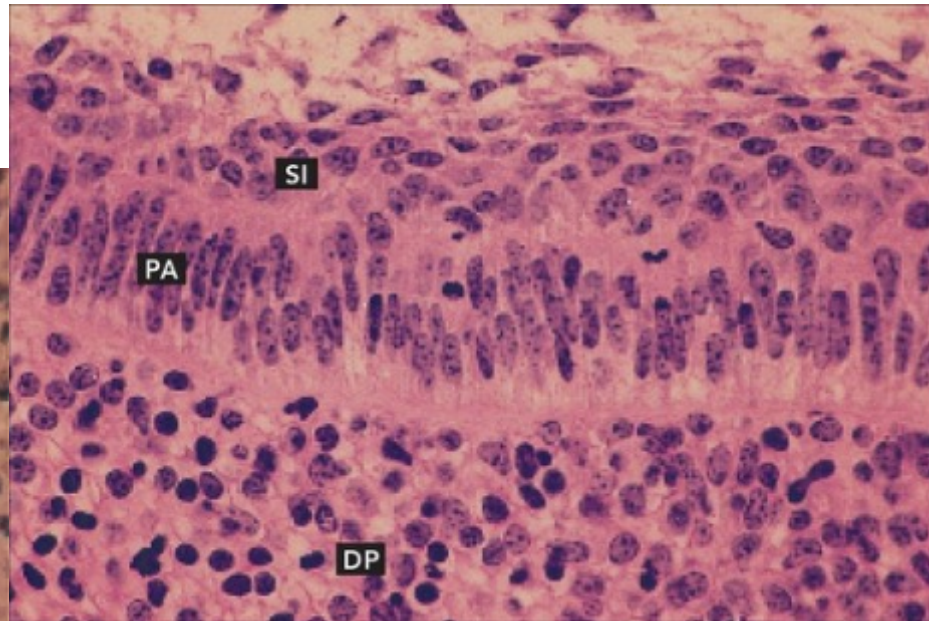
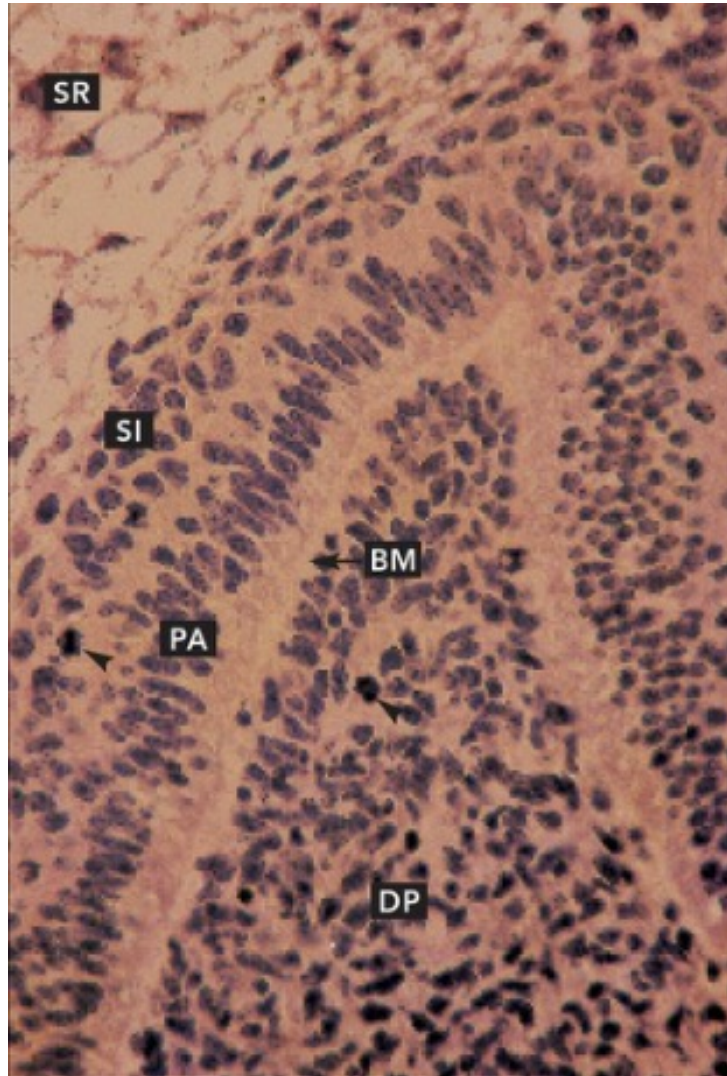
Dental
lamina

Successional
dental lamina

Early bell stage

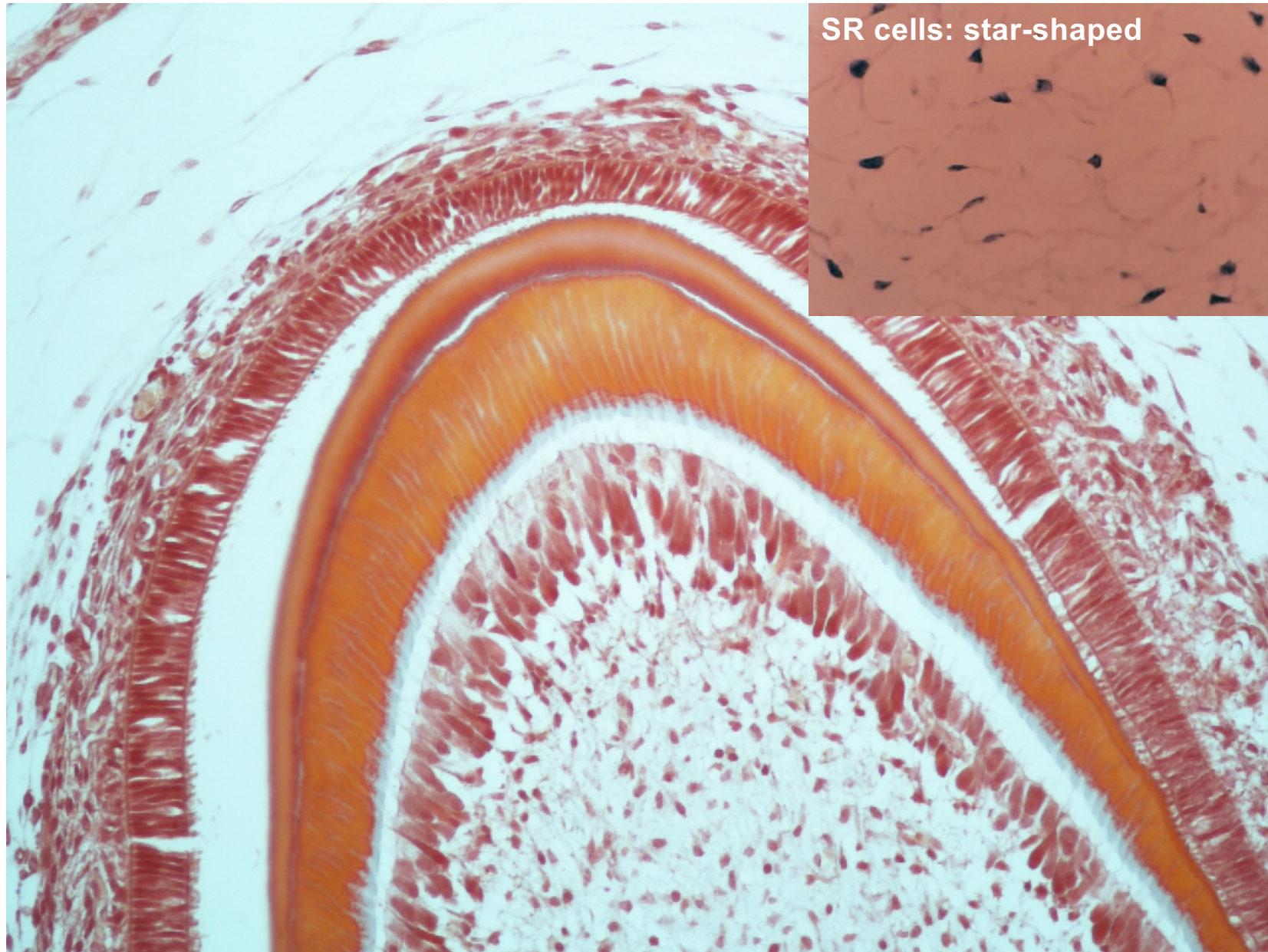


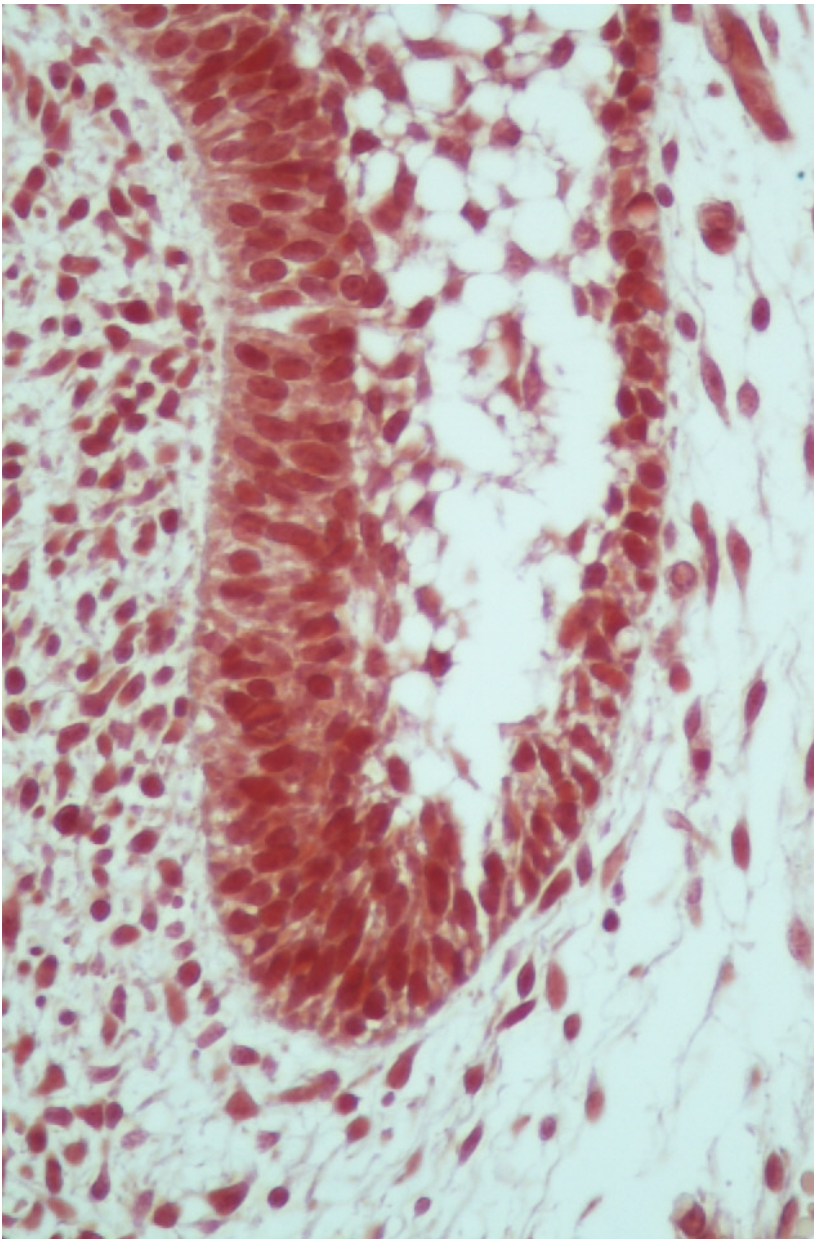
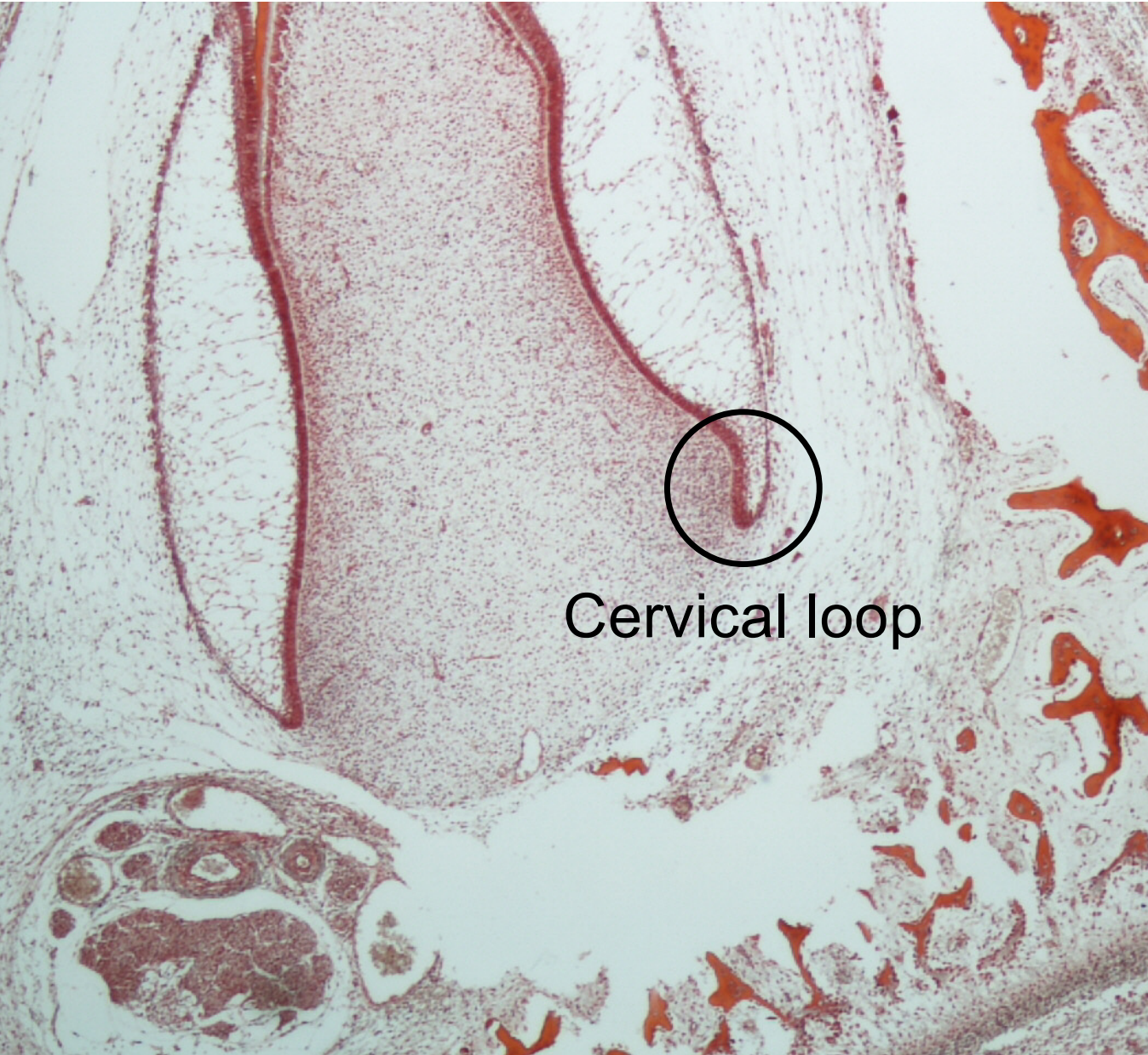
Bell stage

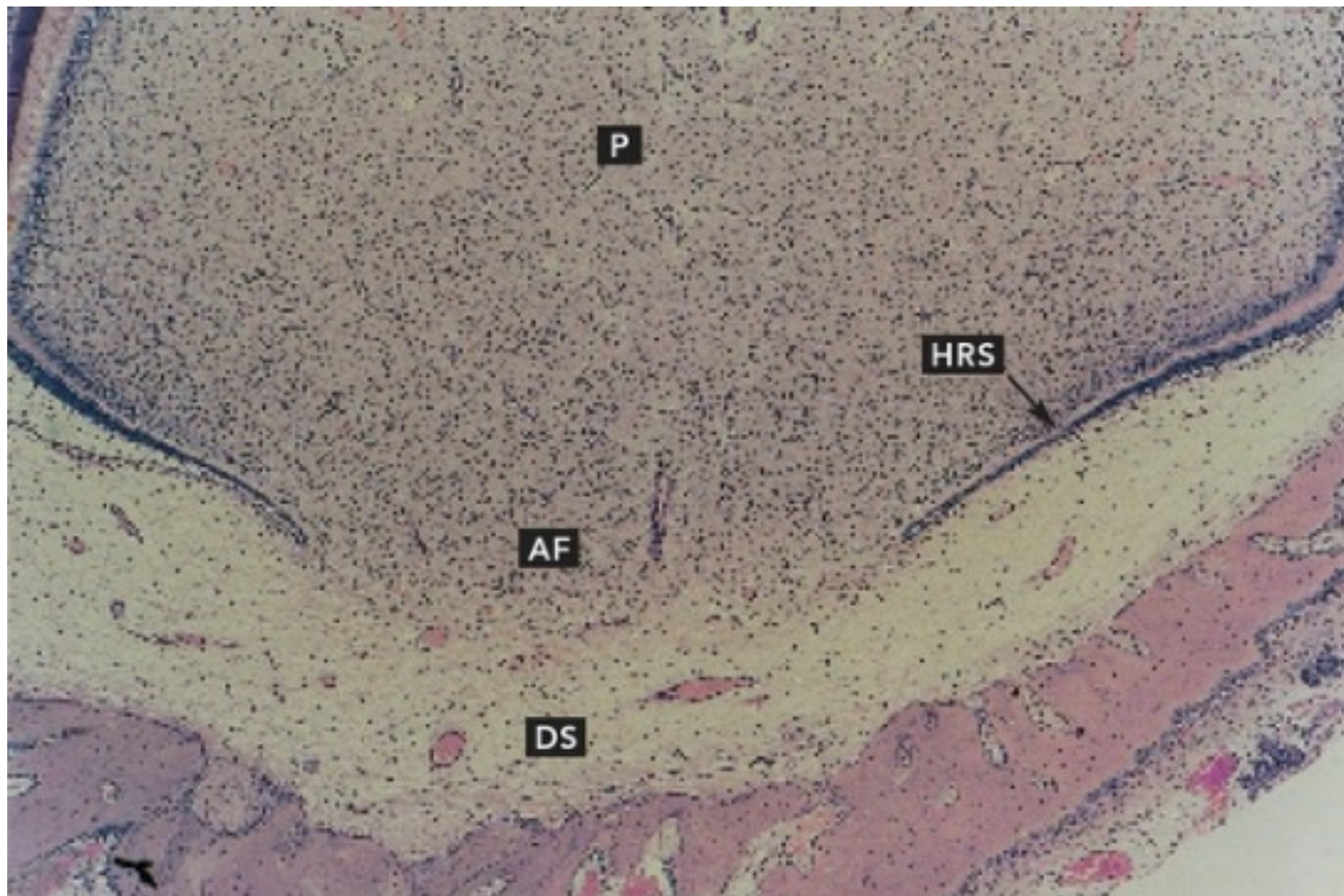


Key point

- Ameloblast
- Enamel
- Dentin
- Odontoblast
- Pulp
- Stellate reticulum
- Stratum intermedium

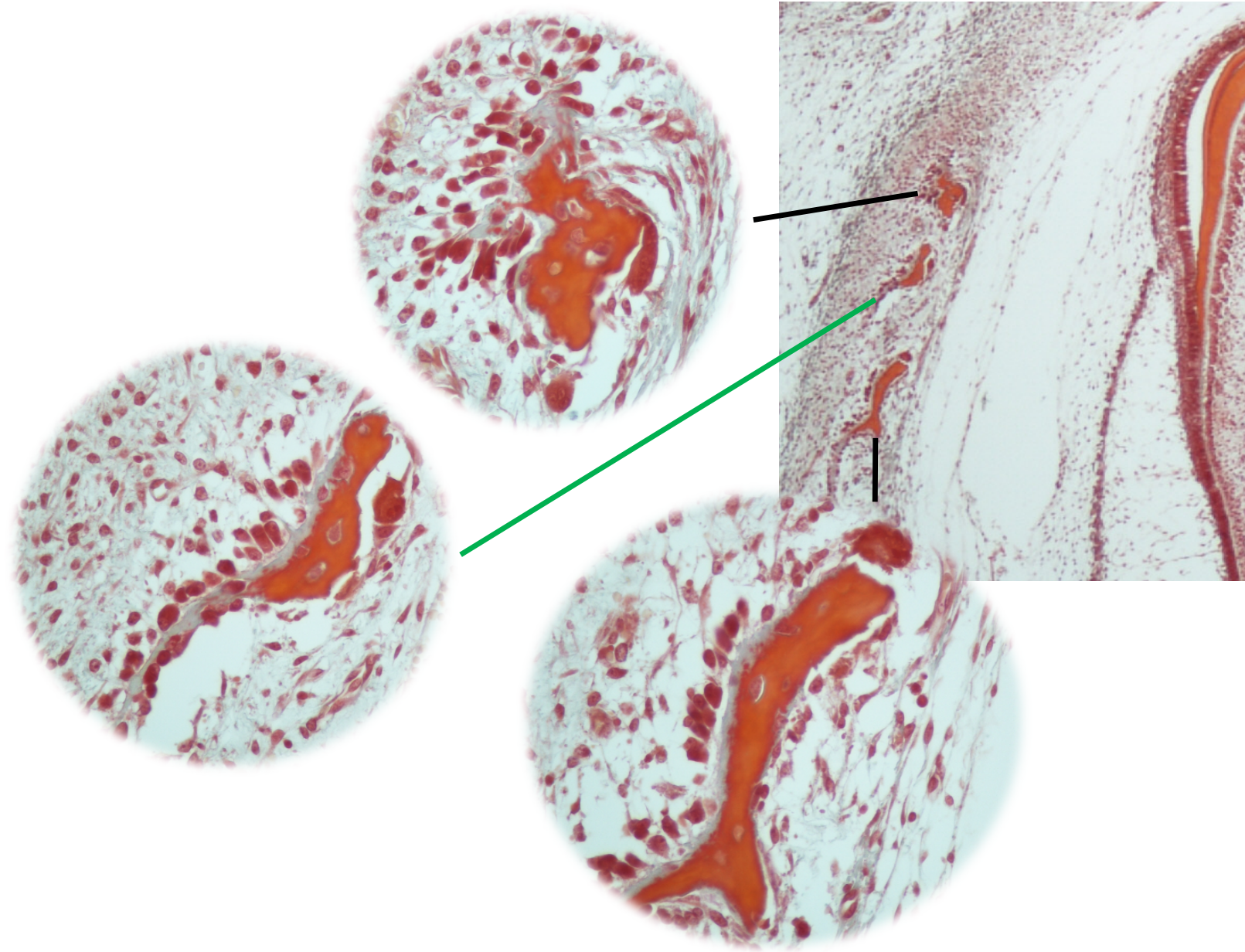


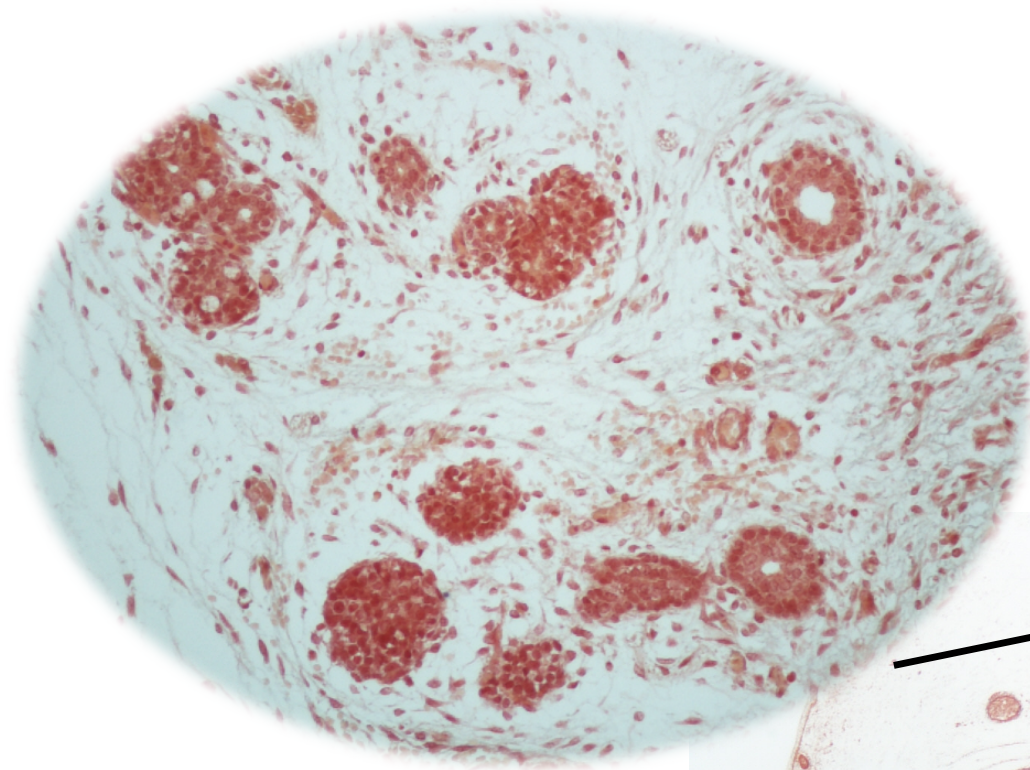




Key point

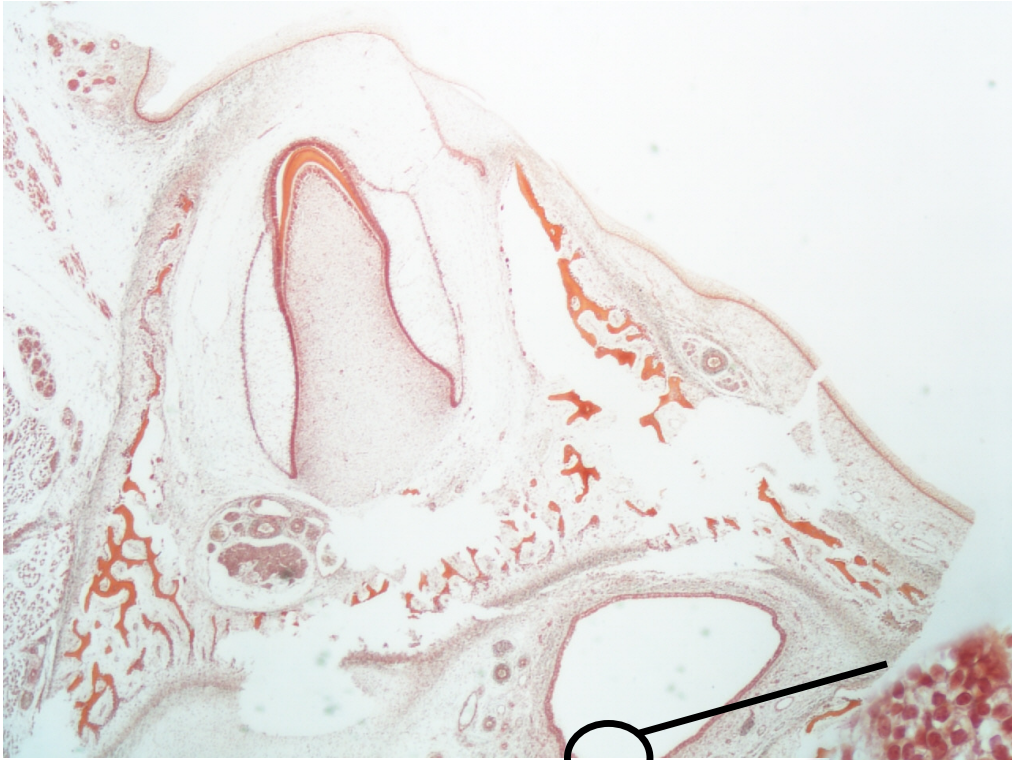
- Woven bone
- Osteoblast
- Osteocyte
- Osteoclast



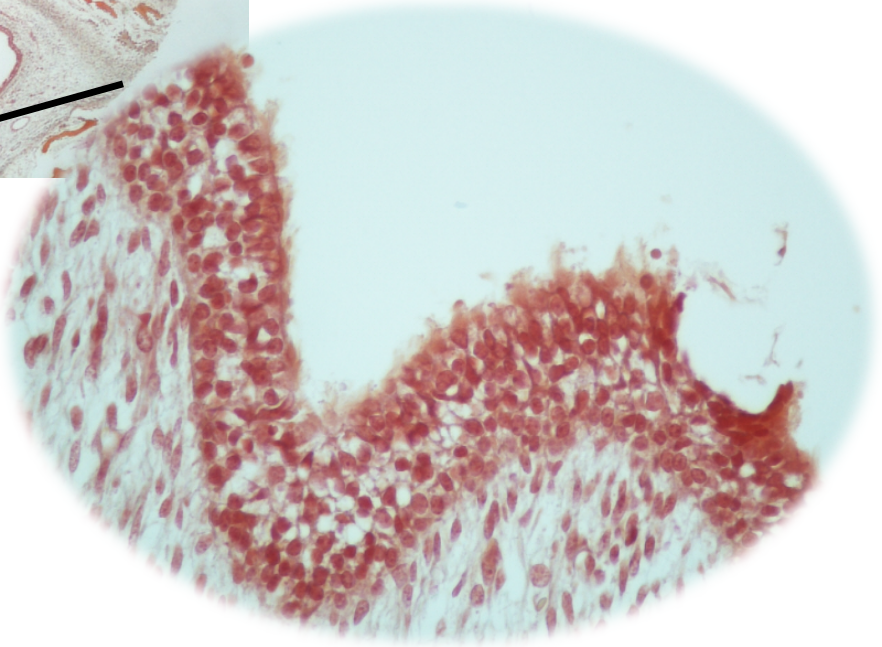


Salivary glands





Respiratory mucosa



Nerve and
blood vessels

